



New Bürstner Lyseo TD 745 'Harmony' Line Motorhome, 4 berth 7.65metres long low profile with drop down double bed over dinette, rear drop down island bed over large rear lounge and Thermofloor double floor.

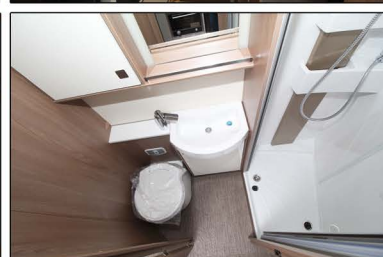
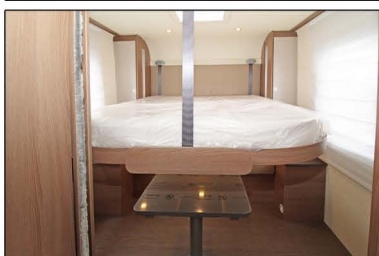
2018 model. Fiat Ducato, Euro 6 2.3L 150PS engine upgrade (£65,035). Light chassis plated upgraded to 3850kg GVW (£170). Comfortmatic 6 speed automatic gearbox (£1,860). **Includes the following specification as Standard – Fiat design pack** (Aluminium trim to dashboard, Instrument panel with chrome bezels, Leather steering wheel and gear knob). **Chassis pack** (Passenger airbag, electrically adjustable and heated mirrors, Manual cab air conditioning including pollen filter, Cruise control, ESP including ASR, Hill holder and traction plus). White painted cab with matching decals. 16" Alloy wheels in Black polish design. Remis cab blinds. Habitation door (approx. 70cm width) with integrated window and operated with central locking. Furniture in Santina. Upholstered in **New Quilted 'Swing' leather** including Pilot front cab seats. Manual roll out awning (length subject to vehicle length). Electric drop-down double bed over dinette (£1,520). Pioneer AVH-5600BT & Avic F160 navigation system upgrade. (£700). Multifunction steering wheel (£90). Truma Combi 6 gas and electric blown air heating. 'Slim Tower' 145 litre fridge/freezer with gas oven. Skyroof over cabin area. GRP roof for hail-storm protection. Removable cab carpets. **New Special Edition for 2018.**

£69,375.00

(In stock)



Layout Diagrams are not to scale



MOTORHOME SPECIFICATION:

MANUFACTURER: Bürstner
MODEL: Lyseo TD 745 'Harmony Line'
BERTHS: 4
MAKE: Fiat Ducato
ENGINE: Euro 6, 2.3L 150PS
TRANSMISSION: Comfort-Matic 6-Speed Automatic
Length approx. 7.65m
Width approx. 2.30m
Height approx. 2.95m
GVW: 3850 kg

It is possible to fund this motorhome from 1 year up to 10 years (120 mths). Details available on request.



blackhorse
CARAVAN & MOTORHOME FINANCE

Every effort has been made to check the accuracy of the information above, but it is always possible that this may contain errors. Please ask us about any details that may be unclear or on which you would like further information.

Southdowns Motorhome Centre, Painter Close, Anchorage Road, Anchorage Park, Portsmouth, Hampshire PO3 5UH
Tel: 02392 674820 Fax: 02392 674821 Web: www.southdownsmotorcaravans.co.uk