

Credo



Technical Information 2014

Concorde
REISEMOBILE AUS LEIDENSCHAFT

Standard equipment

CHASSIS FIAT DUCATO

CREDO

Turbo-diesel engine with electronically controlled common rail direct injection	•
Emissions class Euro 5 with exhaust recirculation, sticker colour green	•
6-speed gearbox with shift on the dashboard	•
Front-wheel drive with TCS (traction control system)	•
AL-KO lightweight low-frame chassis with 220 mm lowered frame	•
Heat-galvanised frame parts	•
Integrated seat belt for driver and passenger seats	•
Independent suspension on front and rear axle	•
Tyres with steel rims 225 / 75R16	•
Disc brakes on front and rear axle	•
Electronic brake wear indicator	•
Electronic brake-force distribution (EBD)	•
Electronically controlled anti-lock braking system (ABS)	•
Alternator 14 V / 110 A	•
Battery 12 V / 95 A	•
Fuel tank 90 l	•
Full beam headlights with daytime running lights, LED parking light with indicators, low beam	•
Steering wheel with adjustable height	•
Tyre sealant with compressor (weight savings compared with spare wheel approx. 30 kg)	•
Added front-axle stabiliser	•
Warning triangle, first-aid kit, warning light and wheel chock	•
Plastic wheel trims	•

Standard equipment

BODY

CREDO

Panoramic laminated-glass windscreen with screensystem	•
Modern and aerodynamic coach look for optimum overview	•
Front section made of high-strength corrosion-proof fibreglass composite material	•
Tempered glass side windows with insulating glazing in the driver's compartment, tinted with pleated blackout blind (can also be used as a sun shade while driving) and fly screen, thermally separated frame	•
Double-glazed, tinted plastic windows in living area, hinged or sliding, with pleated blind and fly screen	•
Electric front roller blind	•
High-strength, durable aluminium composite construction solidtherm	•
Thermal-bridge-free, fully insulated wall-joint technology using high-density solid PU profiles	•
Insulated driver's compartment	•
32 mm wall, roof and underfloor thickness, of which 30 mm closed-cell RTM hard foam	•
Walls, roof and underfloor inside and outside in high-quality aluminium in sandwich construction	•
Exterior sheet smooth, stove enamelled white	•
Fully accessible roof	•
Aluminium roof moulding with rain channels to reduce staining of side walls	•
Side skirts made of high-strength, corrosion-free and rot-resistant fibreglass composite material	•
Rear wall made of fibreglass composite sandwich with PU foam core	•
Heated raised floor with height of approx. 300 mm, accessible from the side via outer flaps	•
Storage space flaps with low-maintenance, high-quality needle felt on the inside	•
Sandwich underfloor and sandwich intermediate floor each with 30 mm thick RTM foam, floor insulation 60 mm in total	•
Rear-axle wheel arches in fully insulated sandwich construction	•
Illuminated rear garage with garage doors left and right, lashing system	•
Driver's side garage door 565 x 500 mm	•
Internal entry step with light	•
Electric step	•
Solid entrance door incl. two-point locking	•
Fly screen for entrance door	•
Club seats with adjustable height, integrated seatbelt system and armrests	•
External light with safety circuit (automatic shut-off when engine is started)	•
Low-maintenance, durable, reinforced PVC garage flooring	•
Coach mirrors (short) with wide angle, electrically heated and adjustable	•

Standard equipment

LIVING ROOM / SLEEPING AREA

CREDO

Furniture flaps and doors in Cherry Finition (coated on both sides)	•
Wall and ceiling panelling with colour-coordinated carpet	•
Soft-walk floor covering. Colour: antia anthracite	•
Ergonomically-shaped seating group. High-quality microfibre upholstery with zippers (body), incl. driver's compartment seats	•
High-quality Roman blinds	•
High-quality light-weight furniture	•
Furniture flaps and doors with metal spring hinges and robust pressure locking	•
Front wall cabinets continue above windscreen	•
High-quality living-room table	•
Wardrobe with lighting	•
Sliding door as room partition to sleeping area	•
Rear bed with slatted frame and comfortable, high-quality cold foam mattress	•
Inlay cushions for longitudinal berths (L-bed)	•
Wall cabinets on side for sleeping area	•
Midi-Heki with lighting, fly screen and pleated blackout blind in living room	•
Mini-Heki with fly screen and pleated blackout blind in sleeping area	•
Light canopies with LED spotlights and indirect lighting	•
Robust metal handle for boarding assistance	•
12 V socket and 230 V sockets	•

FOLD-DOWN BED (OPTIONAL)

Sleeping area approx. (mm)	1920 x 1300
Height above bed approx. (in mm)	900
Comfortable cold-foam mattress with two-part spring slatted frame	•
Mini-Heki with fly screen and pleated blackout blind	•
Driver's compartment curtain	•

Standard equipment

KITCHEN

CREDO

Kitchen area with splash guard	•
Stainless-steel three-flame hob with automatic ignition and glass cover	•
Single-lever chrome mixer tap with pull-out sprinkler head	•
Mineral kitchen worktop in lightweight construction with stainless steel sink. Colour: sanded mirage	•
160 l refrigerator with separate freezer compartment, AES (automatic and manual energy selection 12 V / 230 V / gas)	•
Drawers with Servo-Soft closing	•
Integrated cutlery tray	•
LED spotlights under the wall cupboards	•
Light canopies with LED spotlights and indirect lighting	•
Integrated waste system in kitchen base unit	•
2 x 230 V socket	•

BATHROOM / TOILET

Single-lever, pull-out chrome mixer tap on washstand	•
Spacious mirror cabinet with shelf and open corner shelf	•
Lighting with energy-saving LED spotlights, controlled from outside the bathroom	•
Plexicor washstand panel with seamlessly moulded-in washbasin. Colour: arctic white	•
Shower with acrylic glass door	•
Shower column with shelf and chrome rail	•
Shower fitting with wall bar and height-adjustable shower	•
Cassette toilet with porcelain bowl	•
Bathroom equipment with toilet paper holder, toilet brush, liquid soap dispenser, towel hook and rail, toothbrush glasses	•
Mini-Heki with fly screen and pleated blackout blind	•
Full-length mirror	•
230 V socket	•

Standard equipment

WATER / GAS / HEATING

CREDO

Gas bottle compartment for 2 x 11 kg gas bottles	•
"Duocontrol" gas regulator with crash sensor and automatic bottle switching	•
Household siphons	•
Stop cocks for all devices	•
Fresh-water and waste-water tank in heated raised floor, each approx. 160 l, (fresh-water tank approx. 40 l in driving position)	•
Optimal tank draining via drainage cock in raised floor	•
Top-mounted cleaning openings for all tanks, accessible from living area	•
Automatic, central pressurised water pump with filter system	•
Alde 5500 W hot-water and gas central heating with thermostatic control and timer, 230 V electric heating element, up to a maximum of 3000 W, duct shut-off with integrated hot water boiler to supply all tapping points	•

ELECTRICAL / TV / RADIO

Gel battery 1 x 85 Ah	•
Service-friendly access to on-board electronics with perforated plate housing in rear garage	•
230 V CEE connection in outside wall	•
Central control and distributor module in micro-processor technology	•
Automatic residual current circuit-breaker to protect the 230 V system	•
Automatic charging with electronic control and battery temperature sensor, maximum charging current 25 A	•
Inverter from 12 V to 230 V sine 350 W with mains priority circuit	•
Disconnection of on-board electrics in the event of under-voltage, with automatic reconnection	•
Automatic charging of living room and vehicle battery, charge maintenance during connection of external power and while driving	•
Automatic connection and disconnection of living room and vehicle battery	•
Cut-out switch for living-room batteries	•
Automatic refrigerator switching from 12 V to gas / 230 V when engine is switched off (with land connection)	•
LED lighting in interior	•
Double DIN radio with CD/DVD and MP3 player and USB connection, with two-way speaker system	•

Standard equipment

ON-BOARD ELECTRONICS

CREDO

Ultra-modern, micro-processor-controlled on-board electronics with BUS (Binary Unit System) technology

•

Central control panel with 3.5" colour display

•

Master switch for all consumers

•

Buttons to switch the following equipment on and off:

• Frost protection of the gas pressure control

•

• Lighting

•

• Water pump

•

• Inverter

•

• Heating

•

LCD display panel to monitor:

• Fresh water tank (fill level in %)

•

• Waste water tank (fill level in %)

•

• Battery voltage of the vehicle battery and living room battery

•

• Outdoor and indoor temperature switchable

•

• Charging and discharging current

•

• External power supply

•

• Battery parallel circuit

•

• Date and time with alarm function

•

Alarm systems for:

• Waste water tank full

•

• Fresh water tank empty

•

• Battery under-voltage

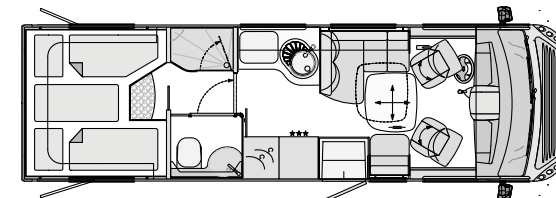
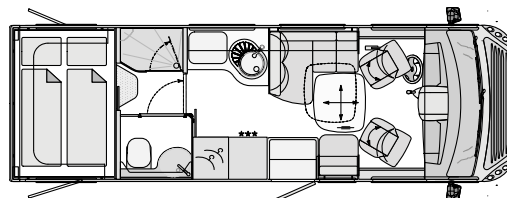
•

• Reserve gas bottle in operation

•

Technical specifications

CREDO FIAT DUCATO



CREDO 731 H

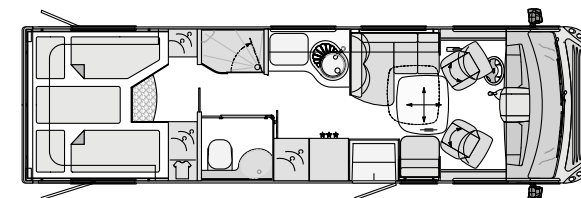
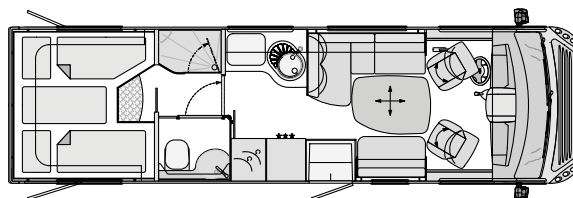
CREDO 781 L

Base vehicle	Fiat Ducato / AL-KO	Fiat Ducato / AL-KO
Chassis type	150 Multijet	150 Multijet
Engine capacity	2.3 l	2.3 l
Output	109 kW (148 bhp)	109 kW (148 bhp)
Torque	350 Nm	350 Nm
Overall length (mm)	7350	7910
Overall width (mm)	2290	2290
Overall height (mm)	3080	3080
Wheelbase (mm)	4143	4443
Total permitted laden mass (kg)	4500	4500
Mass in roadworthy condition (kg)	3630	3740
Payload (kg)	870	760
Towbar load (braked) (kg) (max. total weight of tension 6000 kg)	1800	1800
Seats with seatbelts	4	4
Seating group left (mm)	1290 / 950	1290 / 950
Bench seat right (mm)	590 / 620	590 / 620
Rear bed (mm)	2010 / 1400	2 x 2010 / 830
Fold-down bed dimensions (optional, mm)	1920 / 1300	1920 / 1300
Height above fold-down bed (mm)	900	900
Garage door right clearance H / W (mm)	1090 / 765	1090 / 765
Garage door left clearance H / W (mm)	500 / 565	500 / 565

For more information on dimensions and weights, see page 14.

Technical specifications

CREDO FIAT DUCATO (3-AXLE)



CREDO 831 L

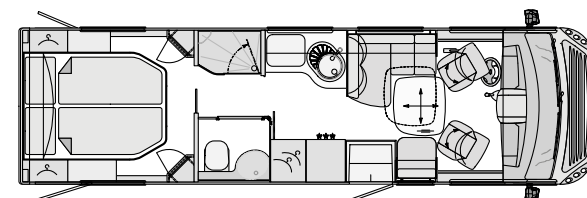
CREDO 831 LS

Base vehicle	Fiat Ducato / AL-KO	Fiat Ducato / AL-KO
Chassis type	150 Multijet	150 Multijet
Engine capacity	2.3 l	2.3 l
Output	109 kW (148 bhp)	109 kW (148 bhp)
Torque	350 Nm	350 Nm
Overall length (mm)	8330	8330
Overall width (mm)	2290	2290
Overall height (mm)	3080	3080
Wheelbase (mm)	4128 + 800	4128 + 800
Maximum permitted laden mass (kg)	5000	5000
Mass in roadworthy condition (kg)	4070	4070
Payload (kg)	930	930
Towbar load (braked) (kg) (max. total weight of tension 6000 kg)	1500	1500
Seats with seatbelts	4	4
Seating group left (mm)	1710 / 950	1290 / 950
Bench seat right (mm)	1010 / 620	1010 / 620
Rear bed (mm)	2 x 2010 / 830	2 x 2010 / 830
Fold-down bed dimensions (optional, mm)	1920 / 1300	1920 / 1300
Height above fold-down bed (mm)	900	900
Garage door right clearance H / W (mm)	1090 / 765	1090 / 765
Garage door left clearance H / W (mm)	500 / 565	500 / 565

For more information on dimensions and weights, see page 14.

Technical specifications

CREDO FIAT DUCATO (3-AXLE)



CREDO 831 M

Base vehicle	Fiat Ducato / AL-KO
Chassis type	150 Multijet
Engine capacity	2.3 l
Output	109 kW (148 bhp)
Torque	350 Nm
Overall length (mm)	8330
Overall width (mm)	2290
Overall height (mm)	3080
Wheelbase (mm)	4128 + 800
Maximum permissible laden weight (kg)	5000
Mass in roadworthy condition (kg)	4070
Payload (kg)	930
Towbar load (braked) (kg) (max. total weight of tension 6000 kg)	1500
Seats with seatbelts	4
Seating group left (mm)	1290 / 950
Bench seat right (mm)	1010 / 620
Rear bed (mm)	2000 / 1520
Fold-down bed dimensions (optional, mm)	1920 / 1300
Height above fold-down bed (mm)	900
Garage door right clearance H / W (mm)	1090 / 765
Garage door left clearance H / W (mm)	500 / 565

For more information on dimensions and weights, see page 14.

Optional extras chassis

CHASSIS FIAT DUCATO

	ADDITIONAL WEIGHT in kg
Engine version Multijet 180, capacity 3.0 l, 130 kW (177 bhp), torque 400 Nm at 1400 rpm	40
Towbar coupling with 1650 kg towbar load (weight specified incl. vertical load) (only available factory-fitted)	64
Automatic 6-gear transmission (only in conjunction with ESP)	20
Manual air-conditioning unit in driver's compartment	30
Wind-up stabiliser jacks on vehicle rear	12
ESP (for 731 H)	1
Cruise control	2
Pneumatic suspension rear axle with "raise and lower" function (not in conjunction with AL-KO Level Controller [ALC])	
2-axle	45
3-axle	75
Four-channel fully pneumatic suspension with automatic levelling (not in conjunction with AL-KO Level Controller [ALC])	
2-axle	55
3-axle	80
AL-KO Level Controller (ALC) (not in conjunction with pneumatic suspension)	19
Alloy wheels	
2-axle	-12
3-axle	-18

Optional extras body

BODY

Driver's side garage door 1010 x 565 mm instead of standard door	4
Side wall awning 5.0 m, with crank (for 731 H)	50
Side wall awning 5.0 m, electric (for 731 H)	54
Side wall awning 5.5 m, with crank (for 781 L)	54
Side wall awning 5.5 m, electric (for 781 L)	60
Side wall awning 6.0 m, with crank (for 831 L, 831 LS, 831 M)	62
Side wall awning 6.0 m, electric (for 831 L, 831 LS, 831 M)	66
Rear garage floor with aluminium ribbed plate covering incl. lashing system, side surfaces with needle felt	20
Rear bed with sprung base instead of slatted frame	6

Optional extras body

LIVING ROOM / SLEEPING AREA

ADDITIONAL WEIGHT
in kg

Mechanically operated fold-down bed instead of front overhead cupboards	35
Midi-Heki instead of Mini-Heki (sleeping area) ¹	6
Panorama skylight instead of Mini-Heki (sleeping area) ¹	19
Panorama skylight instead of Midi-Heki (living room) ¹	13
Height-adjustable table with table-top cushion	8

KITCHEN

Solid kitchen worktop in beige (sanded sahara) with a seamlessly moulded wash basin, chrome railing and towel rail	15
Roof fan with ventilation function instead of Mini-Heki	4
190 l refrigerator instead of 160 l standard refrigerator	6
190 l refrigerator / oven combination with grill instead of 160 l standard refrigerator	23

ELECTRICAL

Gel battery 140 Ah (instead of 85 Ah standard battery)	20
Electrical power package	
2 x gel batteries 140 Ah (instead of 85 Ah standard battery) 100 A combination charger with mains power pre-selection, sine inverter from 12 V to 230 V, 4000 W peak and 2000 W continuous output with mains failure compensation	75
Alarm system with monitoring of the interior, the garage doors and of the living-room door	3
Dual reversing camera with shutter (image via standard radio)	4
Solar unit with approx. 120 W maximum output ¹	15
Solar unit with approx. 2 x 120 W maximum output ¹	30

¹ Please coordinate the possible combinations of roof structures and extensions with your sales representative.

Optional extras body

TV / RADIO / TELEPHONE

ADDITIONAL WEIGHT

in kg

Satellite TV set with 50 cm dish, fully-automatic alignment, single LNB, 22" LED flat screen in overhead cupboard on right, electrically height-adjustable, sound reproduction possible via radio ¹	44
Satellite TV set with 85 cm dish, fully-automatic alignment, multi-user equipment with TWIN LNB, connection for second receiver with 12 V / 230 V and antenna socket in the sleeping area, 22" LED flat screen in overhead cupboard on the right electrically height-adjustable, sound reproduction via radio (overall vehicle height plus approx. 100 mm) ¹	45
Internet satellite TV set with 85 cm dish, fully-automatic alignment, multi-user equipment with TWIN LNB, connection for second receiver with 12 V / 230 V and antenna socket in the sleeping area and GPS SKEW. With 22" LED flat screen: system with TV reception function and internet access ¹	45
Combination 230 V / 12 V antenna socket with floor inlet. Position: in external storage compartment on the left next to body door (for optional external TV connection) (Sat output)	1
22" LED flat-screen for rear sleeping area with integrated TV tuner (only in conjunction with satellite antenna 85 TWIN-Sat)	15
DVB-T antenna for reception of terrestrial digital TV	8
Navigation system (with lorry software and 6.2" touch screen, integrated radio with DVD, CD and MP3 playback, hands-free device for telephone with Bluetooth) and dual reversing camera with shutter	4
Sound system with two-way speaker in the driver's compartment, two broadband speakers in the living area, subwoofer, sound processor	25

WATER / GAS / HEATING / BATHROOM

External shower in the garage (driver's side)	2
Gas alarm for monitoring living room (carbon monoxide, propane, butane, stupefying gas, KO gas)	2
Gas external wall socket on passenger side (gas extraction)	1
Roof air-conditioning 2400 W with 1700 W heating element (overall vehicle height plus 130 mm) ¹	34
Engine heat exchanger which uses the heat given off by the engine to heat the living area	4
Diesel block heater (only in conjunction with engine heat exchanger) "Motor Caravan" with convenient permanent heating function (5200 W) incl. timer	10
SOG toilet ventilation via the roof	1
Additional toilet cassette with holding tray	3

¹ Please coordinate the possible combinations of roof structures and extensions with your sales representative.

Optional extras body

UPHOLSTERY MATERIALS / LEATHER / CARPET

ADDITIONAL WEIGHT

in kg

Microfibre upholstery sandstone, smooth cover	as standard	0
Microfibre upholstery cappuccino, smooth cover	as standard	0
Leather upholstery sandstone, smooth cover		25
Leather upholstery mother-of-pearl, smooth cover		25
Leather upholstery Totoro, smooth cover		25
Leather upholstery stone grey, smooth cover		25
Concorde collection: 2 x small scatter cushions, 1 x large scatter cushion, 2 x cosy blankets		8
Soft-walk floor covering. Colour: dark brown	no surcharge	0
Living room carpet linked, removable. Colour: creme		10
Living room carpet linked, removable. Colour: grey-brown		10

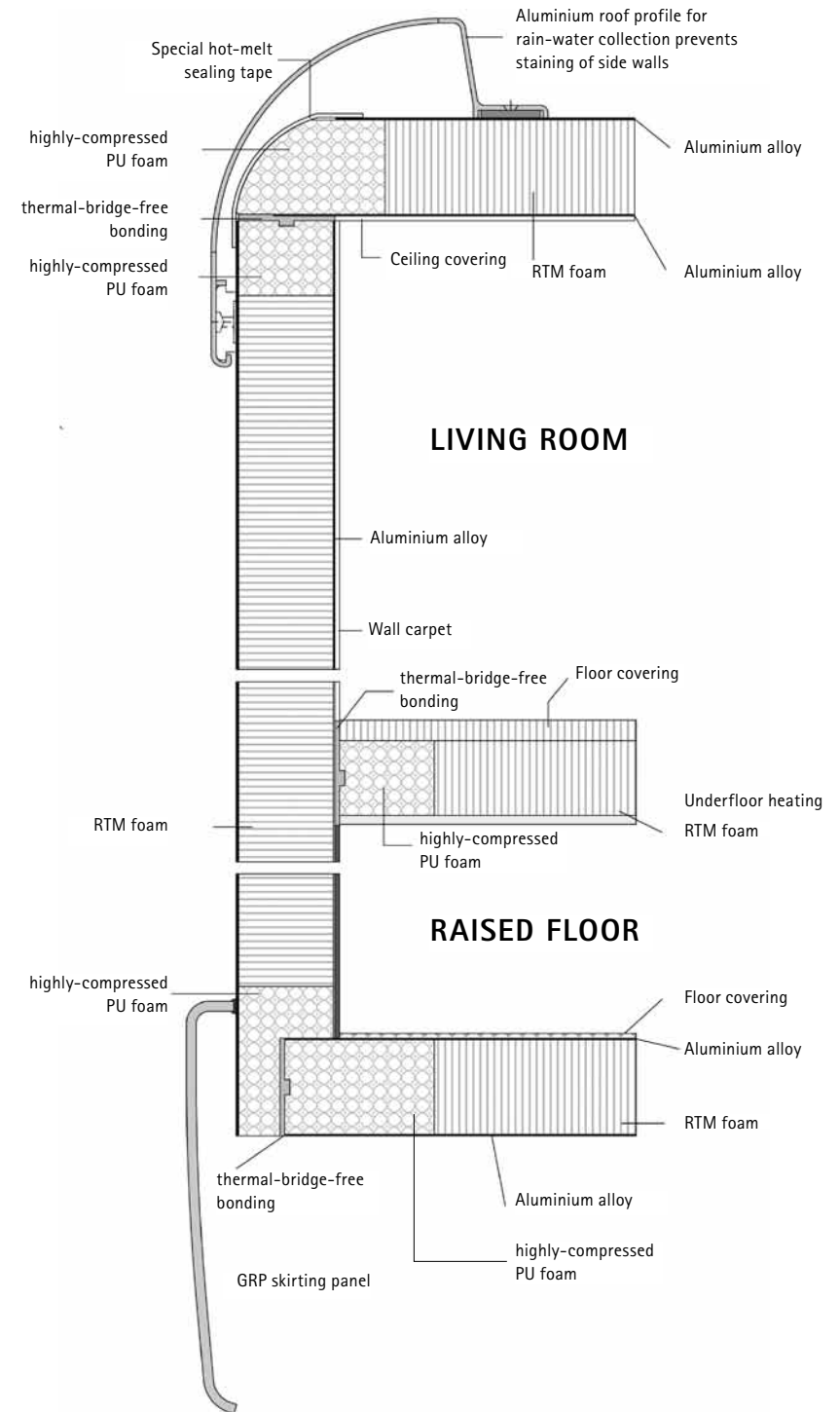
Concorde only uses high-quality materials and leather with a special dirt-repellent coating.

The mass in roadworthy condition consists of: the dry weight with standard equipment plus driver (75 kg), full fuel tank, 40 l fresh water, 1 x full 11 kg steel gas bottle, on-board tool kit, tyre sealant/compressor.
Installing optional extras and accessories may alter the unladen weight and dimensions. All dimensions and weights correspond to the information available at the time of printing. Deviations of +/- 5% are possible and permitted.

Sectional drawing

CONCORDE CREDO CABIN CONSTRUCTION

Concorde represents perfect insulation and outstanding stability in motorhome construction. This is primarily due to the thermal-bridge-free, fully bonded Solidtherm cabin construction with PU hard foam strips as well as the insulation of the side walls with 30 millimetre thick RTM foam. But that's not all: the underfloors and intermediate floors are also made in a sandwich construction and fitted with a total of 60 millimetres of insulation. Furthermore, the side skirts, bumpers and front and rear sections are made of robust yet flexible fibre-glass compound material. The high-gloss, completely smooth, aluminium sandwich wall and ceiling panels create a car-like appearance and aluminium roof profile strips with rain channels efficiently reduce soiling of the side walls. A 10-year ingress warranty on the body against the ingress of moisture from the outside with annual inspection in accordance with the Concorde warranty conditions.



Technical modifications reserved provided that the overall product quality remains the same or is improved and the intended purpose is not impaired. On publication of this technical information, all previous are rendered invalid. Subject to change without notice, errors excepted.

Concorde

REISEMOBILE AUS LEIDENSCHAFT

Concorde Reisemobile GmbH
Concorde-Straße 2-4, D-96132 Schlüsselfeld-Aschbach
Tel.: +49 (0) 9555 9225-0, Fax: +49 (0) 9555 9225-44
Web: www.concorde.eu, E-Mail: info@concorde.eu